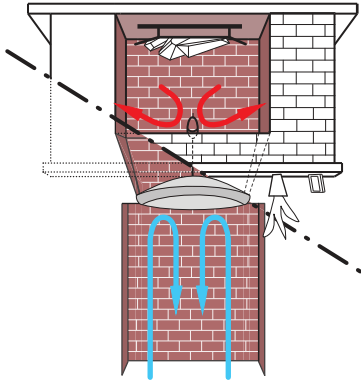


The unique course gray wool from a Herdwick has a density and rigidity unlike any other. This makes it perfect to craft the dense-pack pad on the Flueblocker with high insulation value and air sealing capability.

Herdwicks are an exceptionally hardy stock that flourishes in the icy upland crags of Cumbria, North England. These animals are considered the *Clydesdale of sheep*, because of their size, stamina and rugged wool.

The rugged Herdwick Sheep is the reason the naturally renewable Flueblocker is durable enough to seal your chimney over and over.

### Why Wool?



**Energy Savings**  
A drafty or smelly flue is an indicator that you are losing significant energy through your chimney. The Flueblocker corrects this problem by sealing and insulating the chimney tightly preventing air passage.  
This simple device often pays for itself in one winter.

# Flueblocker™

## Durable Wool Chimney Insulator

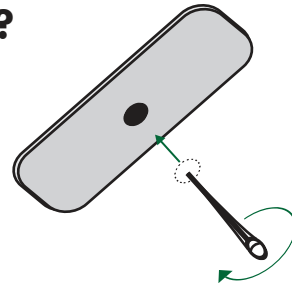
- Stop Drafts
- Save Money
- Easy to Remove and Reuse



Size:

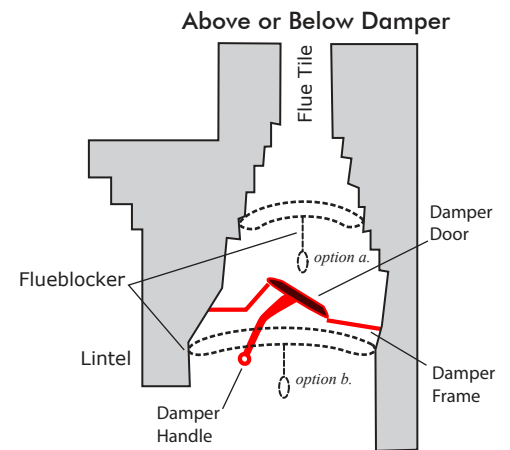
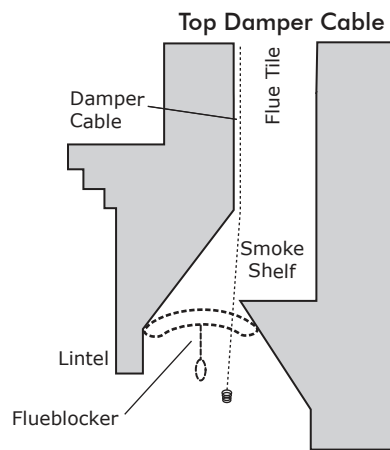
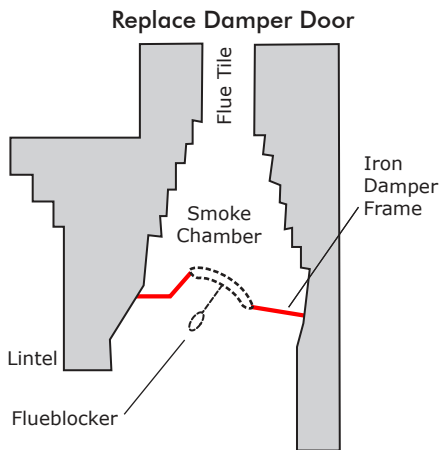
Made in England

# How to install a Flueblocker in a masonry fireplace?



1. Do not use the Flueblocker in a functional gas-log fireplace, code requires they have a constantly open flue. You must remove or disable the gas appliance before installing a Flueblocker.
2. Wear safety goggles and illuminate the firebox with a flashlight.

3. Attach the handle to the Flueblocker. Extension rods to the handle can be purchased separately. Do not over tighten.
4. Ensure the wool pad is 1" or 2" larger than the hole you are plugging. If the Flueblocker is too large, trim it with scissors.



5. Obstructions like damper handles or cables can often be mitigated by removing the cotter pin or bolt holding it in place. If you can't remove the obstruction, open the damper and install the Flueblocker above the damper. Or you can also cut a hole or slit in the Flueblocker to accommodate the hardware, but this may affect the tightness of the seal.
6. Press the Flueblocker into place. It should fit snug, but not pucker or gap around the edges.
7. Many more diagrams of Flueblocker applications are at [CleverlySolved.com](http://CleverlySolved.com), or call technical support at 608-467-0229.

## Limited Warranty:

Cleverly Solved warrants all of its products to be free of defects in material and workmanship for a period of one year from date of invoice by end user. Cleverly Solved will at its option, replace or repair parts found defective and return equipment or parts to the purchaser. The above stated warranty does not apply to products, which have failed due to improper installation, misuse, alteration, unauthorized repair or modification. This warranty extends only to the original purchaser and is not transferable or assignable. Warranty service or additional warranty information may be obtained by visiting [www.CleverlySolved.com](http://www.CleverlySolved.com) or calling 608-467-0229. If found defective under the terms of this warranty, repair or replacement will be made, without charge. This warranty covers normal use and does not cover damage or defect which results from alteration, accident, neglect, or improper installation, operation, or maintenance. Cleverly Solved does not accept responsibility for damage done to a person, property, chimney, or home, however it is caused.

## ATTENTION!



8. Use the included reminder to mark your firebox clearly, so you remember to remove the Flueblocker before starting a fire.
9. You MUST remove the Flueblocker before you use the fireplace. Be careful of loose chimney debris when you remove it.